

UNBOXING AND INSTALLATION

Nostalgie II

Professional Plus

How-To Guide





Overview

Proper unboxing and installation of the ILVE Nostalgie II and Professional Plus II range are essential to ensure safe operation and long-term performance. This guide provides the necessary steps for safely unpacking, positioning, and installing the appliance.



Prior to installation, verify that the model and electrical or gas configuration match the site requirements. Carefully inspect the unit for any shipping damage before proceeding. The range must be installed in accordance with local building codes and manufacturer specifications. Installation should be performed by a qualified and licensed technician.

Additional Resources:

For a full illustrated guide, refer to the ILVE support article:

[How to Unbox and Install ILVE Nostalgie II & Professional Plus II Range](#)

Watch the step-by-step video tutorial:

[Unboxing & Installation — ILVE Nostalgie II & Professional Plus II Range](#)

Tools & Parts Required

Crowbar

Screwdriver

Pliers

Two people (for safe lifting and positioning)

Cardboard or protective floor padding

Step by Step

- ① Use a crowbar to gently loosen and open the wooden crate from the base.



- ② With the crate loosened, carefully lift and remove it to reveal the appliance.



- ③ Remove any remaining cardboard packaging to access the range.



- ④ Peel off the protective plastic wrapping to expose the exterior finish of the ILVE range.



Step by Step (cont.)

- ⑤ Remove the top grates and burners to prevent damage during handling.



- ⑥ Slide out the bottom drawer of the range and set it aside.



- ⑦ Using a screwdriver or pliers, remove the oven doors to reduce weight and improve maneuverability.



- ⑧ Remove all racks, trays, and accessories from both oven cavities.
- Important:** Ensure the unit is completely empty before proceeding.



Step by Step (cont.)

- ⑨ Place a piece of the original cardboard packaging on the floor to protect the flooring and the appliance during movement.



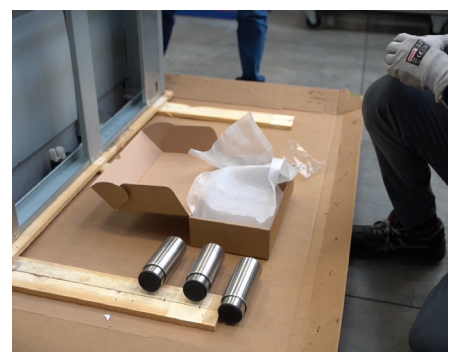
- ⑩ Before lifting, ensure you have a firm and balanced grip on the unit.



- ⑪ With assistance from a second person, gently rotate the range onto its side or back to access the bottom panel.



- ⑫ Remove the adjustable feet from the accessory kit and install them according to the included instructions.



Step by Step (cont.)

- ⑬ Remove the adjustable legs from the kit and install them according to the provided instructions.



- ⑭ Once the feet are installed, carefully lift the range slightly and slide the wooden pallet out from beneath it.



- ⑮ When lifting the unit, avoid placing full weight on the feet to prevent bending or damage.



- ⑯ Carefully move the unit into its final installation position in the kitchen.



Step by Step (cont.)

- ⑪ Reinstall the oven doors, drawer, burners, and grates to complete the installation.



Final Checks

- Confirm the range is level, the legs are secure, and the unit does not rock.
- Verify electrical and/or gas connections comply with local codes.
- Ensure all removed components are properly reinstalled and seated.
- Restore utilities and test burners and oven operation.

For additional assistance, manuals, or replacement parts, visit us.ilve.com or contact our [support team](#).